



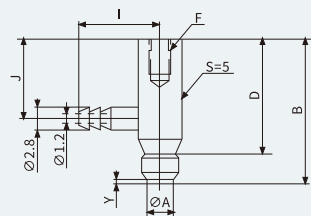
# BLTK/BLYK系列

标准型吸盘固定金属底座

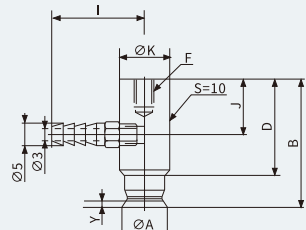
## 规格尺寸(mm)

水平方向连接  
BLYK

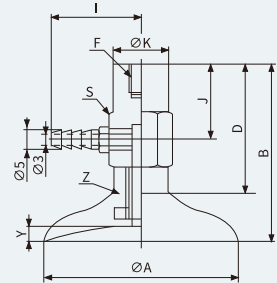
适合吸盘直径  
Ø2·Ø3.5



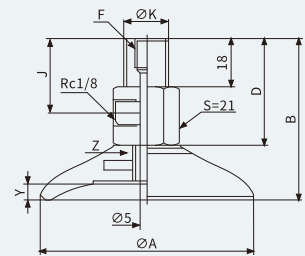
适合吸盘直径  
Ø5·Ø6·Ø8·Ø10



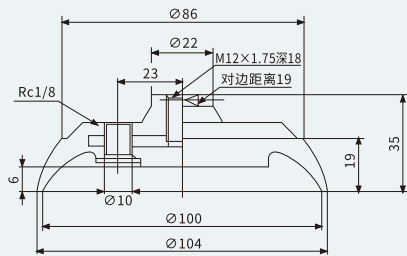
适合吸盘直径  
Ø15·Ø20·Ø25·Ø30·Ø35·Ø40·Ø50



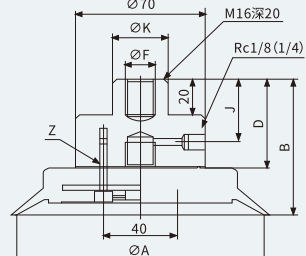
适合吸盘直径  
Ø60·Ø80·Ø95



适合吸盘直径  
Ø100



适合吸盘直径  
Ø120·Ø150·Ø200



S:六角对边尺寸

型号	A	B	D	E	F	I	J	S	Y	Z
BLYK-2	2	20	16	-	M3深5	11	11	-	0.5	-
BLYK-3.5	3.5	20	16	-	M3深5	11	11	-	0.5	-
BLYK-5	5	29	22.5	-	M4深6	21	13	10	0.8	-
BLYK-6	6	29	22.5	-	M4深6	21	13	10	0.8	-
BLYK-8	8	29.5	22.5	-	M4深6	21	13	10	1.2	-
BLYK-10	10	30	22.5	-	M4深6	21	13	10	1.5	-
BLYK-15	15	30	22	-	M4深6	21	14	10	1.9	M5
BLYK-20	20	32	22	-	M4深6	21	14	10	2.3	M5
BLYK-25	25	46	32	14H	M6深8	23	20	12	3.0	M6
BLYK-30	30	44	32	14H	M6深8	23	20	12	2.0	M6
BLYK-35	35	46	32	14H	M6深8	23	20	12	3.0	M6
BLYK-40	40	46	32	14H	M6深8	23	20	12	3.5	M6
BLYK-50	50	47	32	14H	M6深8	23	20	12	4.0	M8
BLYK-60	60	58.5	40	-	M8深11	-	28	17	5.0	M10×1.25
BLYK-80	80	60.5	40	-	M8深11	-	28	17	6.0	M10×1.25
BLYK-95	95	61	40	-	M8深11	-	28	17	6.0	M10×1.25
BLYK-100	-	-	-	-	-	-	-	-	-	-
BLYK-120	120	75.5	50	-	M16深20	-	38	30	6.0	4-M8
BLYK-150	150	82.5	50	-	M16深20	-	38	30	9.0	4-M8
BLYK-200	200	87.5	50	-	M16深20	-	38	30	13.0	4-M8



# BLTK/BLYK系列

标准型吸盘固定金属底座



## 型号规格

BLTK - 2 - N

① ② ③

①真空口方向

T - 垂直方向  
Y - 水平方向

②吸盘直径

2	20	80
3.5	25	95
5	30	100
6	35	120
8	40	150
10	50	200
15	60	

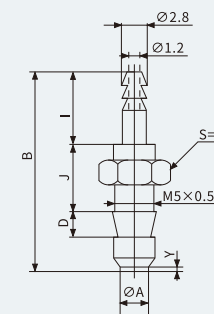
③吸盘材质

N - 丁腈橡胶  
S - 硅橡胶  
NE - 导电性丁腈橡胶  
SE - 导电性硅橡胶

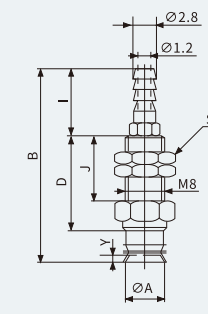
## 规格尺寸(mm)

垂直方向连接  
BLTK

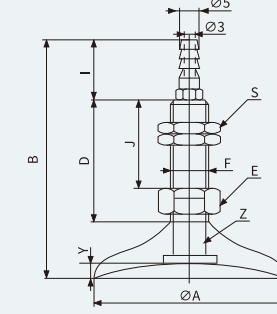
适合吸盘直径  
Ø2·Ø3.5



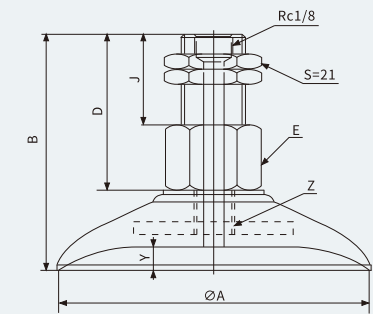
适合吸盘直径  
Ø5·Ø6·Ø8·Ø10



适合吸盘直径  
Ø15·Ø20·Ø25·Ø30·Ø35·Ø40·Ø50



适合吸盘直径  
Ø60·Ø80·Ø95



S:六角对边尺寸

型号	A	B	D	E	F	I	J	S	Y	Z
BLTK-2	2	23.5	3	-	-	8.5	8	-	0.5	-
BLTK-3.5	3.5	23.5	3	-	-	8.5	8	-	0.5	-
BLTK-5	5	30.5	14	-	-	10	12	12H	0.8	-
BLTK-6	6	30.5	14	-	-	10	12	12H	0.8	-
BLTK-8	8	31	14	-	-	10	12	12H	1.2	-
BLTK-10	10	46	22.5	10H	M8×1.25	16	15.5	12H	1.5	-
BLTK-15	15	46	22	10H	M8×1.25	16	15	10H	1.9	M5
BLTK-20	20	48	22	10H	M10×1.5	16	15	10H	2.3	M5
BLTK-25	25	62	32	14H	M10×1.5	16	20	14H	3.0	M6
BLTK-30	30	60	32	14H	M10×1.5	16	20	14H	2.0	M6
BLTK-35	35	62	32	14H	M10×1.5	16	20	14H	3.0	M6
BLTK-40	40	62	32	14H	M10×1.5	16	20	14H	3.5	M6
BLTK-50	50	63	32	14H	M10×1.5	16	20	14H	4.0	M8
BLTK-60	60	58.5	40	21H	-	-	23	-	5.0	M10×1.25
BLTK-80	80	60.5	40	21H	-	-	23	-	6.0	M10×1.25
BLTK-95	95	61	40	21H	-	-	23	-	6.0	M10×1.25

吸盘及组件

- YDX
- YNX
- MNF
- YNT
- SP
- SPE
- SP2E
- SPP
- SPP-JT
- BWF
- BWE
- BWBF
- BWBP
- BX
- BNG
- BNTK
- BNYK
- BNTS
- BNYS
- BNTKM
- BNYKM
- BMG
- BMTK
- BMKY
- BLG
- BLTK**
- BLYK**
- BLTS
- BLYS
- BLTKM
- BLYKM
- BOS
- BOTK
- BOYK
- BOTS
- BOYS
- BOW
- BS
- BKG
- BKTK
- BKYK
- BKTSB
- BKYSB