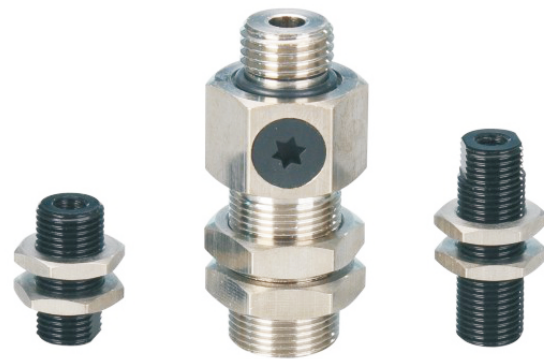




## X-G系列

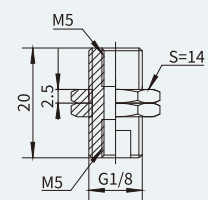
吸盘固定夹



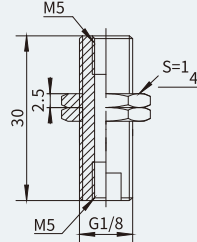
### 产品特点

- \*与接头组装的吸盘可直接拧入连接。
- \*多种大小尺寸的固定螺帽, 可用扳手紧固。
- \*垂直于平行型的真空连接点, 可精确调整吸盘位置。
- \*无需其他安装部件, 经久耐用。

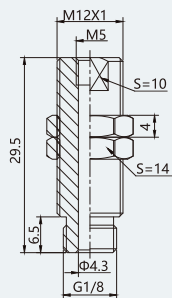
### 规格尺寸(mm)



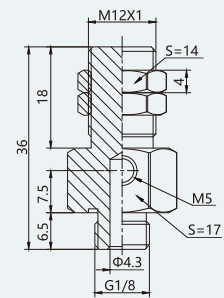
M5-G18-20



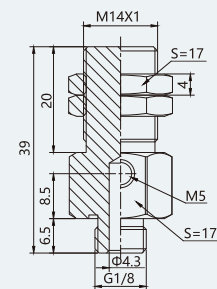
M5-G18-30



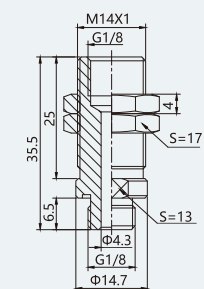
M12-G18-30



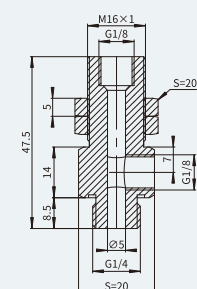
M12-G18-18-L



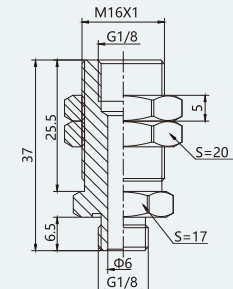
M14-G18-20-L



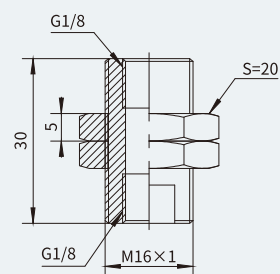
M14-G18-20-L



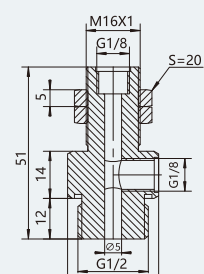
M16-G14-25-L



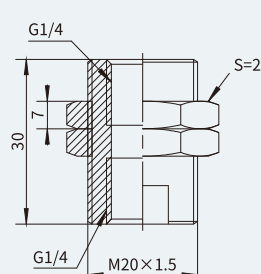
M16-G18-30



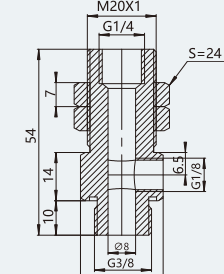
M16-G18-30



M16-G12-25-L



M20-G14-30



M20-G38-30-L